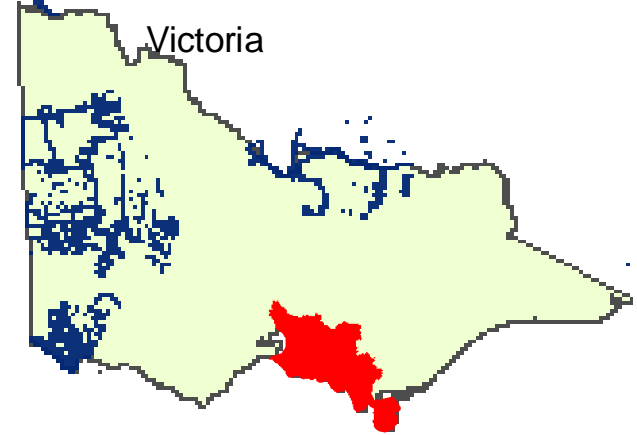


**Bunurong RAP Boundary
with Aboriginal Community Areas
& Indigenous Land Use Agreements**

ABORIGINAL HERITAGE ACT 2006
AREAS IN RELATION TO
REGISTERED ABORIGINAL PARTIES

Department for
Victorian Communities



Legend

- Bunurong_RAP_Boundary
- Aboriginal Community Areas
- ILUA
- towns

- Roads**
- Unsealed
 - Arterial
 - Sub-Arterial
 - Local
 - Freeway
 - Highway

- Lakes**
- Waterways
 - watercourse_area
 - wb_lake
 - wetland_swamp
 - flat_stl
 - Parks



GDA 94

1:400,000

0 5 10 20
Kilometres

Produced by Aboriginal Affairs Victoria
12 July 2007
This publication may be of assistance to you but the State of Victoria and its employees
do not guarantee that the publication is without flaw or is wholly appropriate
for your particular purposes and therefore disclaim all liability for any error, loss or other
consequence which may arise from you relying on any information in this publication.
K:\GIS\projects\Registered Aboriginal Parties\Mapping\Council Maps
Bunurong-41-j-15 Land 07-v1 avm.mxd

